



2-Pass

Firetube Boilers

HP Ranges from 100 BHP – 2,500 BHP

Excellence in the making

2-Pass

Firetube Boiler

Every FRONTIER® firetube boiler is produced against a companywide “Concept to Completion” credo that exists from project inception through to boiler commissioning and start-up. Our manufacturing facilities are equipped to deliver on the diversity of firetube applications across multiple industries. Our firetube team works seamlessly from in-house engineering and project management on through to manufacturing, logistics and field service to deliver a flawless product. Victory Energy controls the quality and timeliness on all project engagements to ensure that the product arrives on time and on budget.



2-PASS TECHNOLOGY

- Greatly reduces furnace draft loss
- Engineered for highly efficient operations
- Maximizes fuel to steam efficiency
- Longer steam release area

WETBACK DESIGN

- Ideally suited for “varying” steam loads
- Engineered for less yearly maintenance issues, wetback boilers utilizes it’s water as the heat bearer to boiler components
- Water cooled flue gas reversing chamber

F2-WB FEATURES / OPTIONS

- ✓ Integral Economizer
- ✓ Rifled tubes
- ✓ Ring groove technology
- ✓ Front davited doors
- ✓ Rear davited entry doors
- ✓ 24" OD davited access door to water cooled flue gas reversing chamber and furnace section
- ✓ Heavy-duty gauge tubes - 0.105" MW
- ✓ Heavy-duty steel frame
- ✓ Water-cooled reversing chamber
- ✓ Stainless steel jacket
- ✓ 2-inch mineral wool insulation

Standard: Corrugated furnace (for units over 1,600 HP)

Note: Corrugated furnace will be offered on any size if high pressure designs are required and if customer prefers over plain.



STANDARD DESIGN INCLUDES AN INTEGRAL ECONOMIZER FOR ENHANCED HEAT RECOVERY.

LARGE FURNACE AND TURNAROUND

The 2-pass design is never less than 26 inches turnaround depth. Overall low gas side pressure drop results in low back pressure, facilitating excellent burner performance with low blower motor HP requirements.

MINIMAL THERMAL STRESS

A single flue gas turnaround from the furnace to the 2nd pass tubes minimizes tube sheet temperature differentials. Less thermal stress means reduced maintenance and repair costs.



HEAVY-DUTY DAVIT DOORS

RIFLED TUBES

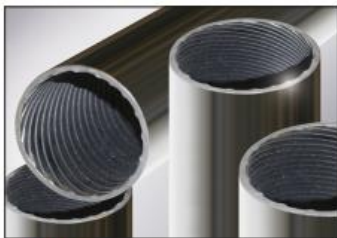
Because of their internally rifled shape, the rifled tubes are more efficient. The boiling crisis takes place later, thus allowing for greater heat transfer between the tube and the fluid outside the tube.



CORRUGATED FURNACE

EROSION PROTECTION

Victory Energy includes a rugged steel covering over the door insulation instead of a sprayed on hardener used by other manufacturers.



RIFLED TUBES

RING GROOVE ENGINEERING

Exclusive Victory Energy "ring groove" tube attachment and minimum 3/4 inch ligament distance between tubes coupled with a tubesheet thickness which is never less than 3/4 inch results in a very robust tube-to tubesheet connection.



RING GROOVE WITH 3/4 INCH LIGAMENTS

Management and maintenance

Calderas del Norte offers technical support 24 hours a day, throughout the Mexican Republic, through specialized and certified technicians.

Through predictive, preventive and corrective maintenance, it allows the equipment to be available at all times and working efficiently; which results in savings of unnecessary expenses and guarantees the security of the systems.

Predictive

Preventive

Corrective

To learn more, please call or visit us online at calderasdelnorte.com

Calderas[®]
del norte

Carr. A Los Ramones km. 1,
Pesquería 66679, Nuevo León
Tel. 01 800 849 8459