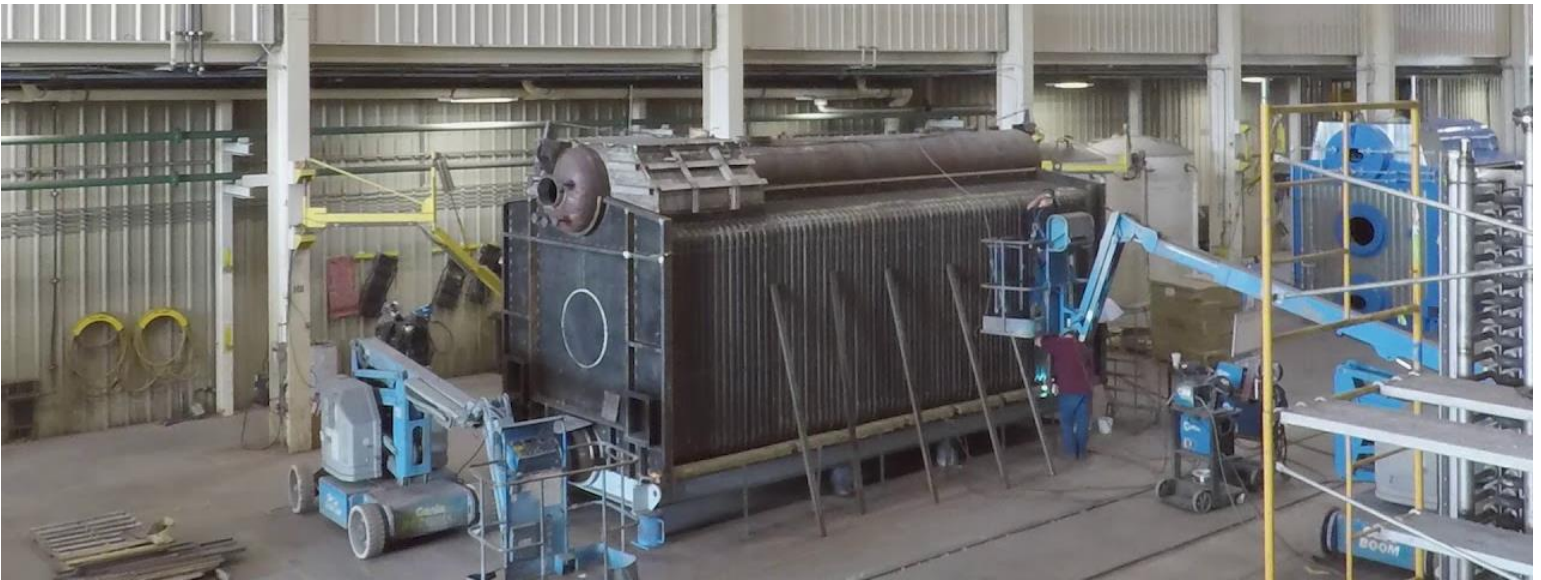


**VICTORY ENERGY**® 



# Victory Energy

**Watertube Boilers**

Full Steam Ahead!

# Voyager series

## O-TYPE WATERTUBE Industrial – Duty Design

The Victory Energy VOYAGER® O-type watertube boiler is designed to provide a rapid ramp rate and is easy to ship, install, operate and maintain. These versatile, robust boilers have become very popular for applications that are extremely demanding in harsh environments.

Its symmetrical configuration is ideally suited for restrictive floor plans, while the gas outlet allows the addition of an enhanced heat recovery system in a vertical configuration to maintain the most efficient overall footprint.

Superheated versions are designed to minimize the steam temperature fluctuations across the operating range of the boiler.



Each VOYAGER O-type industrial boiler is custom engineered with constructability in mind.

### CAPACITIES

Up to 500,000+ PPH

Pressures range up to 2,000 PSIG

Temperatures up to 1,050°F

Saturated or superheated steam

Ideal for restrictive floor plans

# Discovery series

## D-TYPE WATERTUBE Industrial – Duty Design

DISCOVERY® D-type watertube boilers are operating in hundreds of industrial applications in a multitude of industries worldwide. This proven design offers large furnaces and are engineered for long-term reliability. They are especially well-suited for high-pressure, superheated steam applications with larger capacities.

Units range well in excess of 500,000 PPH. Modular and field-erected sizes are available as well as customized solutions including elevated/remote steam drum configurations. All superheaters are placed within the boiler's convective zone to eliminating exposure to the radiant energy in the furnace and ensures a long and reliable operating life.



### CAPACITIES

Up to 500,000+ PPH

Pressures range up to 2,000 PSIG

Temperatures up to 1,050°F

Saturated or Superheated steam

Ideal for large capacities and modular configurations

# Voyager series

## A-TYPE WATERTUBE Industrial – Duty Design

The Victory Energy VOYAGER® A-type watertube boiler is designed to provide a rapid ramp rate and is easy to ship, install, operate and maintain. These versatile, robust boilers have become very popular for applications that are extremely demanding in harsh environments.

Its symmetrical configuration is ideally suited for restrictive floor plans, while the gas outlet allows the addition of an enhanced heat recovery system in a vertical configuration to maintain the most efficient overall footprint.

Superheated versions are designed to minimize the steam temperature fluctuations across the operating range of the boiler.



### CAPACITIES

Up to 500,000+ PPH

Pressures range up to 2,000 PSIG

Temperatures up to 1,050°F

Saturated or superheated steam



## Management and maintenance

Calderas del Norte offers technical support 24 hours a day, throughout the Mexican Republic, through specialized and certified technicians.

Through predictive, preventive and corrective maintenance, it allows the equipment to be available at all times and working efficiently; which results in savings of unnecessary expenses and guarantees the security of the systems.

**Predictive**

**Preventive**

**Corrective**

To learn more, please call or visit us online at [calderasdelnorte.com](http://calderasdelnorte.com)

***Calderas***<sup>®</sup>  
*del norte*

Carr. A Los Ramones km. 1,  
Pesquería 66679, Nuevo León  
Tel. 01 800 849 8459